



*When buying open-cast mining equipment with trade mark BELAZ you can be sure of the most optimal approach to solving of all production and technological problems and assuring the lowest handling costs due to following features:*

- complete set deliveries of mining equipment;*
- high-grade unification of parts and assemblies;*
- optimal prices of equipment and spares;*
- wide range of consumption materials used;*
- simple maintenance and repair;*
- low labour input for maintenance;*
- long operating life;*
- service security and technical support along whole usage period;*
- constant improvement work over trucks being produced and development of new models under account of customers' requirements.*

## Series 7555

**High productivity, reliability and cost-efficiency** of Series BELAZ-7555 dump trucks are assured due to use of highly efficient diesel engines manufactured by leading engine-building Companies of the world, simple and reliable hydromechanical transmission design, efficient body hoist.

**Good maneuverability and smooth ride** of this series of dump trucks are secured through optimally chosen geometry of truck and steering system as well as through use of original design pneumohydraulic suspension.



**The comfort and safety of operator's work** are assured through comfortable cab, hydrostatic steering, combined with highly efficient hydraulic retarder brake and body design with protective canopy functioning as ROPS.

**Long operating life** of trucks is attained due to use of up-to-date power units, high technical level of components, use of high-strength materials for frame and body manufacturing.

	7555B	7555E
<b>Engine</b>		
Model	KTTA 19-C	QSK19-C
Power rating, kW (hp)	522(709)	559(760)
Maximum torque, Nm / rpm	2739/1400	3084/1300-1500
Specific fuel consumption at rated engine power, g/kW hr	209,9	211
<b>Hydromechanical transmission</b>		
Number of gears	6+1	
<b>Weight</b>		
Payload capacity, kg	55000	60000
Unladen weight, kg	40600	44100
Gross weight, kg	95600	104100

Depending on materials handled trucks can be equipped with bodies of increased volume.

## Engines and external systems

Diesel, four-cycle engines with in-line cylinders arrangement and direct fuel injection.

**Air cleaning** is performed by three-stage filter with dry-type elements and automatic dust evacuation from the first stage. Air cleaning system is equipped with filter clogging indicator.

### Hydromechanical transmission 6+1 ratios

gears	forward	reverse
1	4,070	4,530
2	2,865	
3	2,045	
4	1,437	
5	1,011	
6	0,722	



**Lubrication system** is of combined type with "wet" crankcase design. Oil cooling — through water-to-oil engine heat exchanger.

**Cooling system** is of fluid type with forced circulation, combined with hydromechanical transmission cooling system. Hydromechanical transmission oil cooling — through water-to-oil heat exchangers.

**Starting preheating system** is of fluid type.

**Starting system** features electric starter.

Electric system voltage, V	24
Fuel tank capacity, l	740

## Hydromechanical transmission

Hydromechanical transmission with complex one-stage four-wheel automatically-locked torque converter, four-shaft gearbox with friction clutches and electro-hydraulic gearshift actuator, hydrodynamic blade-type retarder.

## Wheels

### Tires

Pneumatic, tubeless, with quarry tread pattern (E-4).

Designation 24.00-35 HC 42

or

Radial

Designation 24.00R35

Internal pressure — in accordance with tire manufacturer instructions.

Rim designation 17.00-35/3.5

## Driving axle

Mechanical, with one-stage tapered final drive, tapered differential with four pinions, planetary wheel drives with spur gears.

Ratios:

final drive 2,73 (2,93)

wheel drive 7,62

total of driving axle 20,8 (22,30)

## Driveline

Two open-type propeller shafts with joints on needle bearings connecting engine with hydro-mechanical transmission and driving axle.

Front propeller shaft has protective guard and connected with engine through elastic clutch.

**Auxiliary brake** - hydrodynamic retarder brake on gear-box driving shaft with fast-speed actuation time and with electro-hydraulic control or multiple-disk oil-cooled brake gears of rear wheels in retarder mode.



## Suspension

Conventional suspension for front axle and driving axle, cylinders are pneumohydraulic (nitrogen and oil), two cylinders both on the front axle and on the rear axle.

Cylinder stroke

front suspension, mm	300
rear suspension, mm	270 till hydraulic buffer

## Brakes

**Service brake** — dry friction single-disk brake gears with two clamps per disk and automatic clearance adjustment for front and rear wheels or multiple-disk oil-cooled brake gears for rear wheels.

**Parking brake** — shoe-and-drum constantly closed brake gear on driving shaft of final drive. Spring actuation, hydraulic control.

**Emergency brake** — parking brake and intact circuit of service brake are used.

## Steering

Hydrostatic system with emergency power source. Steerable front wheels.

Turning radius, m	9
Overall turning diameter, m	20,5
Steering system pressure, MPa	12,5

## Hydraulic system

Combined hydraulic system for body hoist, steering and brake system.

Oil pumps are of gear type. Body hoist cylinders are telescopic with two stages.

Laden body raising time, s	15
Body lowering time, s	14

## Cab

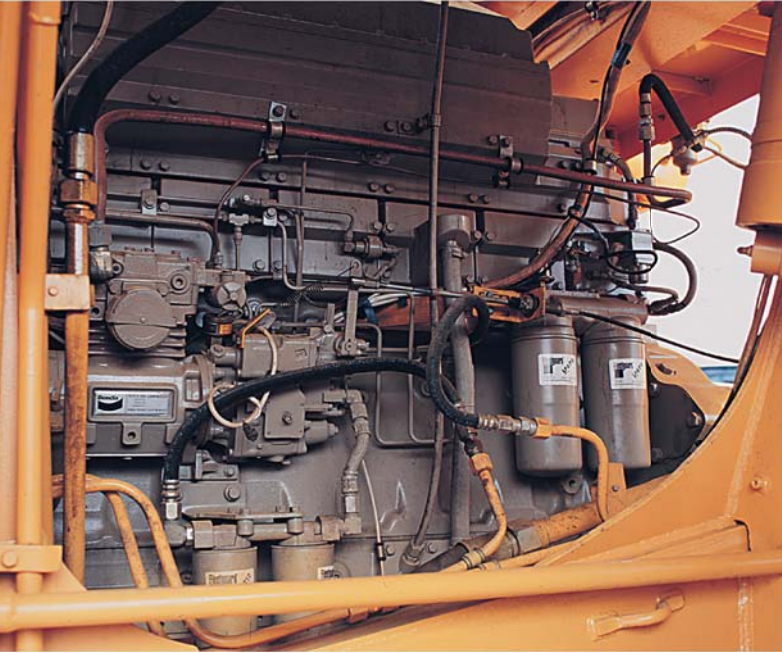
One-seat, two-door, vibro-, heat- and sound-insulated operator's cab with ROPS, adjustable steering column and additional fold-back seat for passenger or probationer. Operator's seat has pneumatic suspension. Cab meets all standard requirements for internal sound levels, vibration, concentration of poisonous substances and dust.

## Body

Bucket type body is a welded structure, has a protective canopy and is heated by exhaust gases. It is equipped with a device for mechanical locking in raised position and with rock-ejectors. Floor and side boards are made of high-strength wear-resistant steel (strength I 1050 MPa, hardness I 360 HB).

## Frame

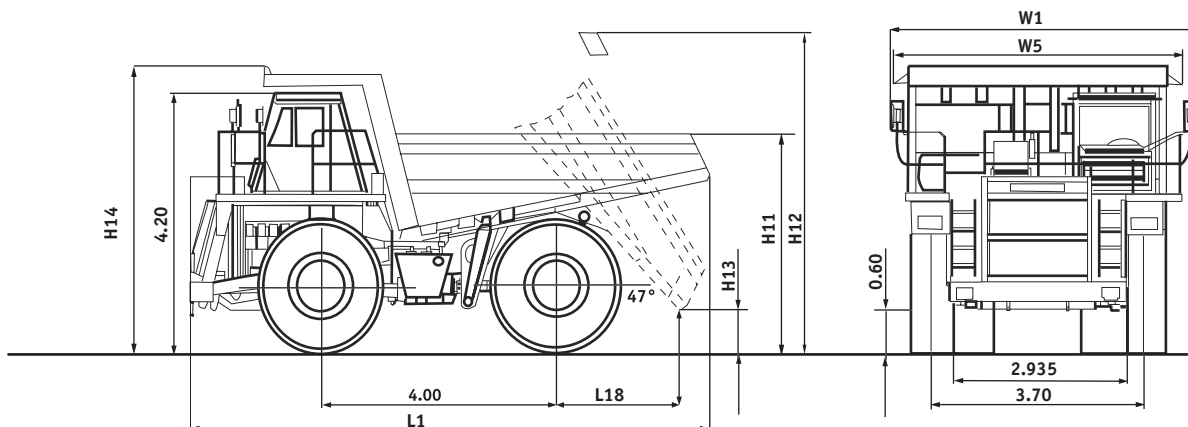
Frame is a welded structure of high-strength low-alloyed steel with yield strength of 460 MPa. Longitudinal box-section variable height side rails are interconnected by cross-members.



Body	Struck volume, m <sup>3</sup>	Heaped volume 2:1, m <sup>3</sup>	H1, m	H12, m	H13, m	H14, m	W1, m	W5, m	L1, m	L18, m	Note (body type)
Standard	22,1	31,3	3,630	8,150	0,775	4,620	5,300	4,740	8,890	2,065	Increased width
Optional	22,1	35,3	3,490	8,200	0,530	4,565	5,700	5,080	9,200	2,300	
		28	3,875	8,400	0,775	4,555	5,300	4,740	8,890	2,065	Increased width, for coal and other bulk cargo with low density
For coal	50	57,9	4,630	8,200	0,530	4,630	5,700	5,080	9,200	2,300	

Exact loading height can change depending on type and model of tires and on tires inflation pressure.

## Overall dimensions, m



---

## Standard complete set of delivery

### Equipment

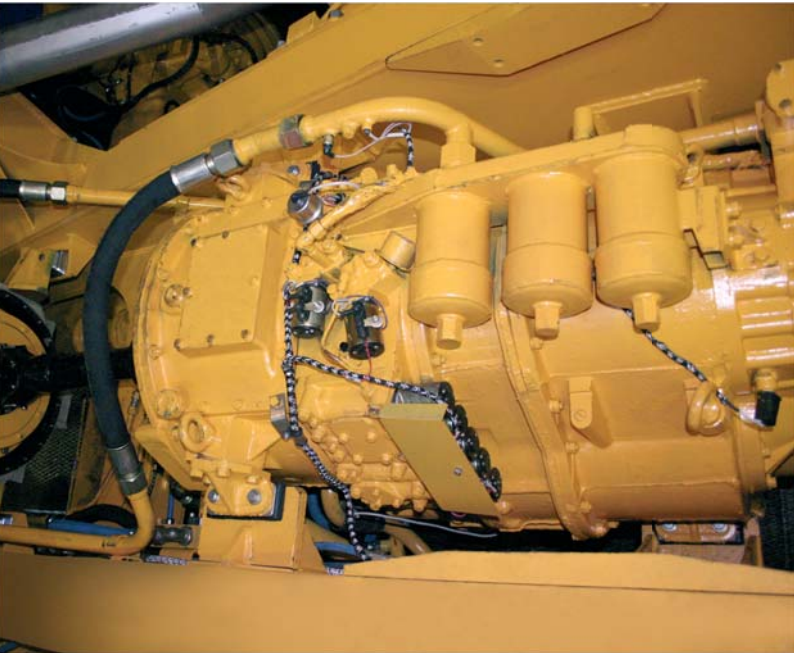
Rock ejectors, rock deflectors, device for body locking in raised position, anti-haul rests, fire-fighting system, fire extinguishers.

### Indicators

Oil temperature in hydromechanical transmission, oil pressure in engine lubrication system, main pressure in hydromechanical transmission, coolant temperature in engine cooling system, brake system oil pressure.

### Instruments

Tachometer with hourmeter, speedometer, voltmeter.



### Cab

Fully adjustable operator seat on the pneumatic suspension, three-ply windshield, sliding door vent, hardened side and rear windows, windshield wiper and washer, fan and heater, door locks, sun visor, rear view mirrors.

### Control lamps

Turning indicator, maximum allowable clogging of hydraulic system filters, maximum allowable clogging of engine air filters, parking brake system, emergency pressure in brake system circuits, emergency engine oil pressure, emergency coolant temperature and level, low fuel level in tank, emergency fuel level in tank, emergency air pressure in pneumatic system, torque converter lock-up, oil-cooled brakes oil temperature warning (110 and 125 °C) for modifications with multiple-disk oil-cooled brakes.

### Lighting

Head lamps, front and rear lights, body lighting lamp, reverse lamp, side turning lamps, number plate lighting lamp, cab dome light, engine compartment light, portable lamp socket, ladder light, deck light, fog lamps.

### Warning system

Electric horn, braking signal lamps, reverse horn, sound alarm of emergency coolant temperature, sound alarm of emergency pressure in engine lubrication system, sound alarm of emergency oil pressure in brake system, sound alarm of low coolant level, clogging of air filters, sound alarm of dump truck movement with applied parking brake.

### Spare parts

Set of spare parts, tools and accessories for warranty operation period.

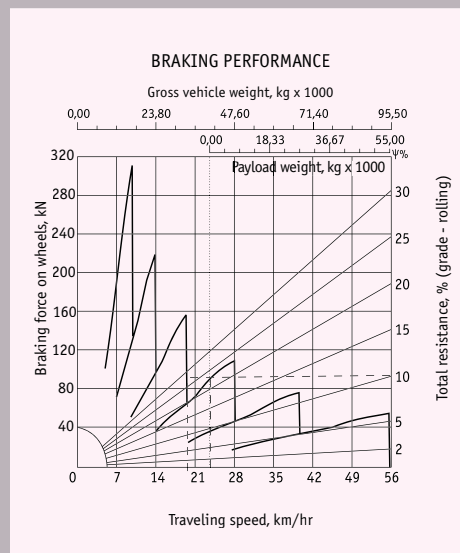
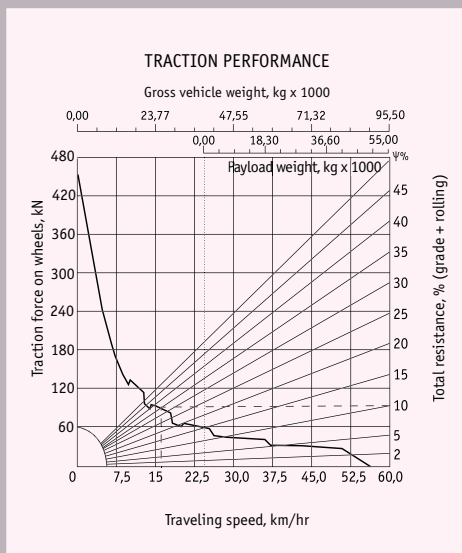
---

## Optional delivery set

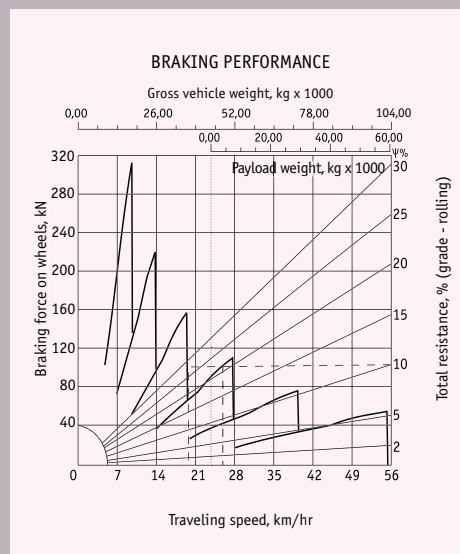
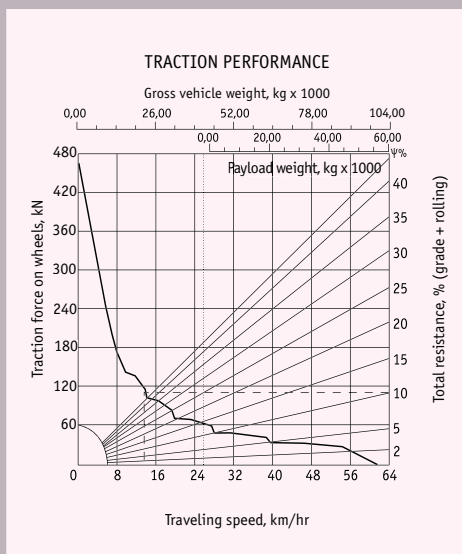
Air conditioning system, auxiliary cab heater, cab air cleaning system, heated mirrors, automatic centralized lubrication system, engine starting preheater, radio set and audio-player, special equipment for maintenance and repair of dump truck, set of spare parts for after-warranty operation period, MICHELIN, GOODYEAR, BRIDGESTONE tires, loading control system, telemetering tire inflation control system, complete set of parts from sheet wear-resistant steel for fettling of the bottom body.

# Series 7555

## BELAZ-7555B



## BELAZ-7555E



Under our policy of continuous improvement, PA "Belarusian Autoworks" reserves the right to modify specifications and design without prior notice.

# BELAZ

Distributor

RUPE "Belarusian Autoworks" (BELAZ)  
 40 let Oktyabrya str. 4, 222160, Zhodino, Republic of Belarus  
 phone: +375 1775 3-27-82, 3-26-23, 3-37-37  
 fax: +375 1775 7-01-37  
 e-mail: office@belaz.minsk.by  
 www.belaz.minsk.by